



**AUSTRALIAN  
AUTOMOBILE  
ASSOCIATION  
(AAA)**

ABN 25 008 256 369

The Australian Automobile Association (AAA) comprises the following organisations which have a combined membership of more than 6 million motorists:

**AUSTRALIAN AUTOMOBILE ASSOCIATION  
(AAA)**

216 Northbourne Avenue  
Canberra, ACT, 2601  
Tel: (02) 6247 7311

**CONSTITUENT MEMBERS  
NEW SOUTH WALES**

National Roads and Motorists' Association Limited  
9 George Street, North Strathfield, NSW 2137  
Tel: (02) 8741 6266 Web: [www.mynrma.com.au/idp](http://www.mynrma.com.au/idp)

\*Royal Automobile Club of Australia  
89 Macquarie Street, Sydney 2000  
Tel: (02) 9233 2355 – Fax: (02) 9252 3131  
*\*For service, please apply to NRMA Limited*

**AUSTRALIAN CAPITAL TERRITORY**

National Roads and Motorists' Association Limited  
29 Lonsdale Street, Braddon ACT 2600  
Tel: (02) 6247 7422 – Fax: (02) 6247 0174  
Web: [www.mynrma.com.au/idp](http://www.mynrma.com.au/idp)

## **VICTORIA**

Royal Automobile Club of Victoria Ltd  
550 Princes Highway, Noble Park North VIC 3174  
Tel: (03) 9790 2211 – Fax: (03) 9790 2628  
Web: [www.racv.com.au](http://www.racv.com.au)

## **QUEENSLAND**

The Royal Automobile Club of Queensland Limited  
2649 Logan Road, Eight Mile Plains QLD 4113  
Tel: (07) 3361 2444  
Web: [www.racq.com.au](http://www.racq.com.au)

## **SOUTH AUSTRALIA**

Royal Automobile Association of South Australia Inc.  
101 Richmond Road, Mile End SA 5031  
Tel: (08) 8202 4600 – Fax: (08) 8202 4520  
Web: [www.raa.net](http://www.raa.net)

## **WESTERN AUSTRALIA**

The Royal Automobile Club of WA (Incorporated)  
832 Wellington Street, West Perth WA 6005  
Tel: (08) 9436 4444 – Fax: (08) 9436 5066  
Web: [www.rac.com.au/travel](http://www.rac.com.au/travel)

## **TASMANIA**

The Royal Automobile Club of Tasmania Limited  
Corner Murray and Patrick Streets, Hobart TAS 7000  
Tel: (03) 6232 6300 – Fax: (03) 6234 8784  
Web: [www.ract.com.au](http://www.ract.com.au)

## **NORTHERN TERRITORY**

Automobile Association of Northern Territory Inc  
MLC Building  
79-81 Smith Street, Darwin NT 0800  
Tel: (08) 8981 3837 – Fax: (08) 8941 2965  
Web: [www.aant.com.au](http://www.aant.com.au)

## **WORLD-WIDE RECIPROCAL MOTORING SERVICES**

The Federation Internationale de l'Automobile (FIA) is the world-wide organisation of Touring Clubs and Automobile Associations. FIA clubs agree to provide a broad range of services to each other's members travelling abroad for a time frame of **three months**. These services may vary from club to club but will generally be the same as those provided by clubs to their own members.

**To obtain the services members must present their current club membership card which should bear the FIA logo or card which identifies them clearly as being members of an FIA club.**

As the type, structure and organisation of FIA clubs, as well as the levels of services they provide, may vary from country to country, the FIA has endeavoured to divide its member clubs into the following categories:

### **CATEGORY A:**

Clubs are those which agree to provide all services, including breakdown services. The availability and general conditions of use are described. (Some clubs might be able to offer more favourable conditions on the basis of bilateral agreements).

### **CATEGORY B:**

Clubs are those which agree to provide in addition to the free basic service more detailed touring and travel services including maps. These clubs are also expected to provide services to visiting members at the same cost and on the same terms that they supply these products to their members.

## **CATEGORY C:**

Clubs are those which agree to provide members of a foreign AIT club, as a minimum, with free basic touring and general information, advice and, as far as possible, some practical help.

## **DISCLAIMER:**

### **INTERNATIONAL DRIVING PERMITS (IDP)**

An IDP is a widely recognised document and is useful for photo identification purposes. In addition it may be a prerequisite for renting a car in many countries.

Please Note:

- An IDP is only valid for 12 months
- An IDP is not a stand-alone document
- An IDP is a translation for the specific category of vehicle the holder is licensed to drive.
- must be accompanied by a valid National Driving Licence at all times
- The holder must comply with local laws

While the AAA takes all steps to ensure accuracy of the information provided in this document it must be noted that some requirements may have changed since printing and motorists are encouraged to check with the club or local authority in the country they plan to visit either prior to or on arrival in that country.

## **ARMENIA**

Australian International Driving Permit **Required**

Side of the road to drive **Right**

Nationality Distinguishing Plates **AM**

### **FEDERATION OF AUTOMOBILE OF ARMENIA (FAA) [B]**

Arshakuniats Avenue 5

Tel: (3741) 535 992, 521 312

Fax: (3741) 534 288, 521 312

Internet: [www.faa.am](http://www.faa.am)

Email: [faacarnet@yahoo.com](mailto:faacarnet@yahoo.com)

Touring services: Material, information and recommendations free  
of charge

## **ARGENTINA**

Australian International Driving Permit **Recommended**

Side of the road to drive **Right**

Nationality Distinguishing Plates **RA**

### **AUTOMOVIL CLUB ARGENTINO (ACA) [A]**

Avenida del Libertador 1850

C-1425 AAR BUENOS AIRES

Tel: (+5411) 4808 4000

Fax: (+5411) 4808 6456

Internet: [www.aca.org.ar](http://www.aca.org.ar)

Email: [presiden@aca.org.ar](mailto:presiden@aca.org.ar)

Mechanical assistance provided 24 hours a day, fees payable

## **AUSTRIA**

Australian International Driving Permit **Required**

Side of the road to drive **Right**

Nationality Distinguished Plates **A**

### **OSTERREICHISCHER AUTOMOBILE, MOTORCYCLE & TOURING CLUB (OAMTC)[A]**

Schubertring 1-3

1010 VIENNA

Tel: (431) 71 1990

Fax: (431) 713 1807

Free breakdown service - call 120

Internet: [www.oeamtc.at](http://www.oeamtc.at)

Email: [office@oeamtc.at](mailto:office@oeamtc.at)

Short distance towing - free of charge - otherwise basic rate applies

## **BAHRAIN**

Australian International Driving Permit **Required**

For private vehicles provided it is endorsed by the Traffic & Licensing Directorate or a Bahraini car rental company on arrival (for 12 months)

Side of the road to drive **Right**

Nationality Distinguished Plates **BRN**

### **BAHRAIN MOTOR FEDERATION (BMF)[C]**

PO Box 54336

Manama

Tel: (+973 17) 406 333

Fax: (+973 17) 406 111

Internet: [www.bmf.com.bh](http://www.bmf.com.bh)

Email: [info@bmf.com.bh](mailto:info@bmf.com.bh)

## **BELARUS**

Australian International Driving Permit **Recommended**

Side of the road to drive **Right**

Nationality Distinguishing Plates **BY**

### **BELARUSIAN AUTO MOTO TOURING CLUB (BKA) [A]**

43 Nezavisimosti Avenue

220 005 Misk

Tel (37517) 233 9111

Fax (37517) 233 9045

Internet: [www.bkaclub.com](http://www.bkaclub.com)

Email: [info@bka.by](mailto:info@bka.by)

Breakdown and towing services available around the clock within 30km of the Minsk area. Free of charge for the members.

## **BELGIUM**

Australian International Driving Permit **Required**

Side of the road to drive **Right**

Nationality Distinguishing Plates **B**

### **ROYAL TOURING CLUB OF BELGIUM (TCB)[A]**

Rue de la Loi 44

1040 BRUSSELS

Tel: (32-2) 233 2211

Fax: (32-2) 233 2205

Internet: [www.touring.be](http://www.touring.be)

Email: [presid@touring.be](mailto:presid@touring.be)

For Breakdown Service it is mandatory to join TS valid for 12 months.

## **BOLIVIA**

Australian International Driving Permit **Required**  
For private vehicles (after 3 months IDP must be stamped by the "Servicio Nacional de Transito")

Side of the road to drive **Right**  
Nationality Distinguishing Plates **BOL**

### **AUTOMOVIL CLUB BOLIVIANO (ACB) [C]**

Avenida 6 de Agosto 2993  
San Jorge, La Paz  
Tel: (5912) 2431 132, 2432 136  
Fax: (5912) 2431 139  
Internet: [www.acbbolivia.com](http://www.acbbolivia.com)  
Email: [acblapaz@accelerate.com](mailto:acblapaz@accelerate.com)  
Towing services provided around the clock. Fees payable.

## **BOSNIA & HERZEGOVINA**

Australian International Driving Permit **Not Required**  
However stays of more than 6 months require a certified translation of the National Licence into Bosnian.

Side of the road to drive **Right**  
Nationality Distinguishing Plates **BIH**

### **BOSNIA AND HERZEGOVINA AUTOMOBILE CLUB (BIHAMK) [A]**

Skenderija 23  
71000 Sarajevo  
Tel: (38733) 212 772  
Fax: (38733) 213 668  
Internet: [www.bihamk.ba](http://www.bihamk.ba)  
Email: [bihamk@bih.net.ba](mailto:bihamk@bih.net.ba)  
Breakdown and towing services available 24 hours a day. Fees payable for spare parts and labour.  
Breakdown service: 1282 (in bigger cities) or 033 1282 (from country side).

## **BRAZIL**

Australian International Driving Permit **Not Required**  
National driving licence accompanied by an official translation (done by a sworn public translator of Brazil) and a photo id required.

Side of the road to drive **Right**  
Nationality Distinguishing Plates **BR**

### **CAR CLUB DO BRASIL (CCB) [A]**

Rua Mexico 11, 16 Andar

C.E.P. 20006-900, Rio De Janeiro

Tel: (5521) 2533 1129

Fax: (5521) 2220 2400

Internet: [www.carclubdobrasil.com.br](http://www.carclubdobrasil.com.br)

Email: [contatos@carclubdobrasil.com.br](mailto:contatos@carclubdobrasil.com.br)

Breakdown and towing service available 24 hours a day. Free of charge until 40 km, spare parts payable

Breakdown service call toll free 0800241129.

## **BULGARIA**

Australian International Driving Permit **Required**

Side of the road to drive **Right**

Nationality Distinguishing Plates **BG**

### **UNION DES AUTOMOBILISTES BULGARES (UAB) [B]**

3, Place Positano, B.P. 257

SOFIA 1000

Tel: (359 2) 935 7935

Internet: [www.uab.org](http://www.uab.org)

Email: [sba@uab.org](mailto:sba@uab.org)

Non-refundable charge for breakdown and towing service.

Breakdown Service: 91146

# **CANADA**

Australian International Driving Permit **Recommended** for car hire  
Side of the road to drive **Right**  
Nationality Distinguishing Plates **CDN**

## **CANADIAN AUTOMOBILE ASSOCIATION (CAA) [A]**

1145 Hunt Club Road  
Suite 200, Ottawa, Canada K1VOY3  
Tel: (1 613) 247 0117  
Fax: (1 613) 247 0118  
Internet: www.caa.ca  
Email: sdanis@national.caa.ca

Breakdown service: Dial club office by referring to local phone directory or by dialling toll-free Super-number 1-800-222-4357 for service. Free, providing that member calls club for service. Parts and gasoline must be paid for.

Towing service: Free up to 5km from site of breakdown or to towing companies repair shop or any repair facility en route (with some restrictions in urban areas). Nonrefundable charge for towing over 5km or where service is delivered by an independent contractor.

*Other Canadian Offices are located at*

### **CAA BRITISH COLUMBIA**

4567 Canada Way  
BURNABY BC V5G 4T1  
Tel: (604) 268 5000  
Fax: (604) 268 5560

•

### **ALBERTA MOTOR ASSOCIATION**

10310-39A G.A. MacDonald Ave.,  
Edmonton, Alberta T6J 6R7  
Tel: (780) 430 5555  
Fax: (780) 430 5676

•

## **CAA SASKATCHEWAN**

200 Albert Street North  
Regina, Saskatchewan, S4R 5E2  
Tel: (306) 791 4321  
Fax: (306) 949 4461

•

## **CAA MANITOBA**

870 Empress Street  
Winnipeg, Manitoba R3C 2Z3  
Tel: (204) 987 6161  
Fax: (204) 775 9989

•

## **CAA CENTRAL ONTARIO**

60 Commerce Valley Drive East  
Thornhill, Ontario L3T 7P9  
Tel: (905) 771 3000  
Fax: (905) 771 3412

•

## **CAA SOUTH CENTRAL ONTARIO**

163 Centennial Parkway  
Hamilton, Ontario, L8E 1N8  
Tel: (905) 525 1210  
Fax: (905) 525 1654

•

## **CAA MID-WESTERN, ONTARIO**

148 Manitou Drive  
Kitchener, Ontario, N2C 1L3  
Tel: (519) 894 2582  
Fax: (519) 893 5512

•

## **CAA NORTH AND EAST ONTARIO**

2525 Carling Avenue  
Ottawa, Ontario, K2B 7Z2  
Tel: (613) 820 1890  
Fax: (613) 820 4646

## **CAA NIAGARA**

3271 Schmon Parkway  
Thorold, Ontario, L2V 4Y6

Tel: (905) 984 8585

Fax: (905) 688 0289

•

## **CAA QUEBEC**

444 Bouvier Street

QUEBEC G2J 1E3

Tel: (418) 624 2424

Fax: (418) 624 3297

•

## **CAA MARITIMES**

378 Westmorland Road

Saint John, New Brunswick, E2J 2G4

Tel: (506) 634 1400

Fax: (506) 649 6890

## **CHILE**

Australian International Driving Permit **Required**

Side of the road to drive **Right**

Nationality Distinguishing Plates **RCH**

## **AUTOMOBILE CLUB CHILE (ACCHI) [A]**

Avenida Andres Bello 1863

Providencia SANTIAGO

Tel: (56-2) 431 1000

Intrnet: [www.automovilclub.cl](http://www.automovilclub.cl)

Email: [acchinfo@automovilclub.cl](mailto:acchinfo@automovilclub.cl)

Breakdown services free

Non-refundable charge for towing over 120 km.

## **COLOMBIA**

Australian International Driving Permit **Required**

Side of the road to drive **Right**

Nationality Distinguishing Plates **CO**

### **TOURING Y AUTOMOVIL DE COLOMBIA (ACC) [A]**

Calle 98 N. 21 - 04

Santa Fe de Bogota

Tel: (+571) 651 4222

Fax: (+571) 651 4230

Intrnet: [www.acc.com.co](http://www.acc.com.co)

Email: [acc@col-online.com](mailto:acc@col-online.com)

Breakdown and towing services available 24 hours a day.

## **COSTA RICA**

Australian International Driving Permit **Recommended**

Side of the road to drive **Right**

Nationality Distinguishing Plates **CR**

### **AUTOMOVIL CLUB DE COSTA RICA (ACCR) [C]**

Apartado Postal 4646-1000

San Jose 1000

Tel: (+506) 220 0443

Fax: (+506) 290 6879

Intrnet: [www.automovilclubcr.com](http://www.automovilclubcr.com)

Email: [info@automovilclubcr.com](mailto:info@automovilclubcr.com)

Basic touring and general information.

## **CROATIA**

Australian International Driving Permit **Recommended**

Side of the road to drive **Right**

Nationality Distinguishing Plates **HR**

### **HRVATSKI AUTOKLUB (HAK) [A]**

Avenija Dubrovnik 44

10000 Zagreb

Tel: (385 1) 66 11 999

Fax: (385 1) 66 23 111

Internet: [www.hak.hr](http://www.hak.hr)

Email: [hak@hak.hr](mailto:hak@hak.hr)

Breakdown service available daily between 6.30am and 6.30pm and is not provided at night.

Towing service is available 24 hours a day.

Non-refundable charge. Call Tel: 987

## **CYPRUS**

Australian International Driving Permit **Recommended**

Side of the road to drive **Left**

Nationality Distinguishing Plates **CY**

### **CYPRUS AUTOMOBILE ASSOCIATION (CAA) [A]**

12 Chrysanthou Mylona St

PO Box 2279, CY-1519 NICOSIA

Tel: (357-2) 2313233

Fax: (357-2) 2313482

Internet: [www.cyprusaa.org](http://www.cyprusaa.org)

Email: [caa@cytanet.com.cy](mailto:caa@cytanet.com.cy)

Breakdown 24hr - 22313131 Free of charge.

Towing service is free to nearest garage/town.

## **CZECH REPUBLIC**

Australian International Driving Permit **Required**

Side of the road to drive **Right**

Nationality Distinguishing Plates **CZ**

### **USTREDNI AUTOMOTOKLUB CESKE REPUBLIKY (UAMK CR) [A]**

Na Strzi 9

140 02 Prague 4

Tel: (+420 2) 611 04 279

Fax: (+420 2) 611 04 278

Internet: [www.uamk-cr.cz](http://www.uamk-cr.cz)

Email: [info@uamk.cz](mailto:info@uamk.cz)

For breakdown ph: 1230. Non-refundable charge for breakdown and towing service.

1230 Touring Information

## **DENMARK**

Australian International Driving Permit **Recommended**

Side of the road to drive **Right**

Nationality Distinguishing Plates **DK**

### **FORENEDE DANSKE MOTOREJERE (FDM) [B]**

Firskovvej 32, PO Box 500

DK 2800 LYNGBY

Tel: (+45) 45 27 07 07

Fax: (+45) 45 27 09 93

Internet: [www.fdm.dk](http://www.fdm.dk)

Email: [fdm@fdm.dk](mailto:fdm@fdm.dk)

Non refundable charge for breakdown and towing service.

## **ECUADOR**

Australian International Driving Permit **Recommended**

Side of road to drive **Right**

Nationality Distinguishing Plates **EC**

### **AUTOMOVIL CLUB DEL ECUADOR (ANETA) [A]**

Avenida Eloy Alfaro

218 y Berlin, QUITO

Tel: (+593 2) 2229 020

Fax: (+593 2) 2562 308

Internet: [www.aneta.org.ec](http://www.aneta.org.ec)

Email: [gerencia@aneta.org.ec](mailto:gerencia@aneta.org.ec)

Towing services provided around the clock.

Breakdown Service: 1 800 55 66 77

## **EL SALVADOR**

Australian International Driving Permit **Recommended**

Side of the road to drive **Right**

Nationality Distinguishing Plates **ES**

### **AUTOMOVIL CLUB DE EL SALVADOR (ACES) [C]**

La Calle Poniente No. 390, entre 15 y 17 Avenida Norte

Apartado Postal 1177

San Salvador

Tel: (+503) 2231 5555

Fax: (+503) 2231 5500

Internet: [www.aces.com.sv](http://www.aces.com.sv)

Email: [aces@saltel.net](mailto:aces@saltel.net)

## **ESTONIA**

Australian International Driving Permit **Recommended**

Side of road to drive **Right**

Nationality Distinguishing Plates **EST**

### **FESTI AUTOKLUBI-AUTOMOBILE CLUB OF ESTONIA (EAK) [A]**

Laki 11

12915 Tallinn

Tel: (372) 6979 100

Fax: (372) 6979 110

Internet: [www.autoclub.ee](http://www.autoclub.ee)

Email: [eak@autoclub.ee](mailto:eak@autoclub.ee)

Breakdown and towing services available 24 hours a day by road patrol cars marked "AUTOABI", payment required on the spot.

Breakdown service call emergency centre 1888 or tel: 6979 188

## **FINLAND**

Australian International Driving Permit **Recommended**

Side of road to drive **Right**

Nationality Distinguishing Plates **FIN**

### **AUTOMOBILE AND TOURING CLUB OF FINLAND (ATCF)[B]**

Hameentie 105

FIN-00550 Helsinki

Tel: (358-9) 7258 4400

Fax: (358-9) 7258 4460

Internet: [www.autoliitto.fi](http://www.autoliitto.fi)

Email: [autoliitto@autoliitto.fi](mailto:autoliitto@autoliitto.fi)

Road service Tel: (09) 7747 6400. Non-refundable charge for breakdown and towing service.

# FRANCE

Australian International Driving Permit **Required**

Side of road to drive **Right**

Nationality Distinguishing Plates **F**

## **FEDERATION FRANCAISE DES AUTOMOBILES- CLUB ET DES USAGERS DE LA ROUTE (FFAC)**

**[A]**

76, avenue Marceau, 75008 Paris

Tel: (33-1) 56 89 20 70

Fax: (33-1) 47 20 37 23

Internet: [www.automobileclub.org](http://www.automobileclub.org)

Email: [ffac@wanadoo.fr](mailto:ffac@wanadoo.fr)

•

## **AUTOMOBILE CLUB DE L'ALSACE**

5, avenue de la Paix

67000 STRASBOURG

Tel: (0-3) 88360434

•

## **AUTOMOBILE CLUB DE MIDI**

17, boulevard de la Gare

B.P. 5866

31506 TOULOUSE CEDEX 5

Tel: (0-5) 62 47 93 30

•

## **AUTOMOBILE CLUB DE NICE - COTE D'AZUR**

9, rue Massenet

06000 NICE, CEDEX

Tel: (0-4) 9387 1817

# GERMANY

Australian International Driving Permit **Strongly Recommended**

Side of the road to drive **Right**

Nationality Distinguishing Plates **D**

## **ALLGEMEINER DEUTSCHER AUTOMOBIL-CLUB E.V (ADAC) [A]**

Am Westpark 8

71373 MUNICH

Tel: (49-89) 76760

Fax: (49-89) 7676 2500

Internet: [www.adac.de](http://www.adac.de)

Email: [adac@adac.de](mailto:adac@adac.de)

Breakdown assistance is rendered by patrols in yellow vehicles marked "ADAC STRASSENWACHT" or in cases where towing is required or during the patrolman's off-duty hours, by ADAC appointed garages with vehicles marked "STRASSENDIENST IM AUFTRAG DES ADAC". Breakdown assistance by ADAC STRASSENWACHT is free-of-charge whereas by ADAC garages must be paid for (non-refundable). For breakdown assistance Dial 01802/222222, or without prefix from mobiles.

### *Other major ADAC Offices are located at:*

Bundesallee 29-30

10717 BERLIN

Tel: (30) 86860 - Fax: 8686289

•

Bennigsenstr. 2-6

28207 BREMEN

Tel: (421) 49940 - Fax: 4994 136

•

Striesener Str. 37

01307 DRESDEN

Tel: (351) 44330 - Fax: 4478850

•

Lyoner Str. 22

60528 FRANKFURT

Tel: (69) 660770 - Fax: 746826

•

Karlsplatz 1,

79098 FREIBURG

Tel: (761) 36880 - Fax: 368815

•

Amsinckstr. 39-41  
20097 HAMBURG  
Tel: (40) 23919-19 - Fax: 23919 271

•

Luxemburger Str. 169  
50963 KOLN  
Tel: (221) 472747 - Fax: 4727452

•

Ridlerstr. 35  
80339 MUNCHEN  
Tel: (89) 51950 - Fax: 5195195

•

Aussere. Sulzbacher Str. 98  
90491 NURNBERG  
Tel: (911) 95950 - Fax: 9595280

•

Am Neckartor 2  
70190 STUTTGART  
Tel: (711) 28000 - Fax: 2800181

## **GREECE**

Australian International Driving Permit **Required**  
Side of the road to drive **Right**  
Nationality Distinguishing Plates **GR**

### **AUTOMOBILE AND TOURING CLUB OF GREECE (ELPA) [A]**

395 Messogion Street  
GR-15343 ATHENS  
Tel: (30 210) 606 8800  
Fax: (30 210) 606 8981  
Internet: [ww.elpa.gr](http://ww.elpa.gr)

Email: [info@elpa.pr](mailto:info@elpa.pr) / [touring@elpa.gr](mailto:touring@elpa.gr)

Non-refundable charge for breakdown and towing services.

For breakdown service dial 104.

•

230, Vas.Olgas-Egeou str.  
551 33 THESSALONIKI  
Tel: (2310) 42 6319 - Fax: 41 1155



Knossou Ave-G.Papandreou str.  
713 06 HERAKLION (CRETE)  
Tel: (081) 28 9440 - Fax: 28 8180



Omirou Square 2  
453 32 IOANNINA  
Tel: (26510) 49695 - Fax: 49643



New entrance to Kalamata  
241 00 KALAMATA  
Tel: (27210) 93376 - Fax: 93376



243, Amerikanikou Erithrou Stavrou str.  
654 03 KAVALA  
Tel: (2510) 22 6638 - Fax: 22 6645



Kyprou 14  
351 00 LAMIA  
Tel: (23310) 26883 - Fax: 31883



3rd km of the National road Larissa-Athens  
411 10 LARISSA  
Tel: (2410) 66 0641 - Fax: 66 0640



18 km Athens-Patras National road  
264 41 PATRAS  
Tel: (2610) 42 6416 - Fax: 42 6416

## **HONG KONG**

Australian International Driving Permit **Recommended**

Side of the road to drive **Left**

Nationality Distinguishing Plates **HK**

### **HONG KONG AUTOMOBILE ASSOCIATION (HCAA)[A]**

G/F 391 Nathan Road

Kowloon, HONG KONG

Tel: (852) 273 952 73

Fax: (852) 2369 0863

Internet: [www.hkaa.com.hk](http://www.hkaa.com.hk)

Email: [general@hkaa.com.hk](mailto:general@hkaa.com.hk)

Free breakdown and towing service.

Breakdown service No. (852) 23044911.

## **HUNGARY**

Australian International Driving Permit **Not Required**

Side of road to drive **Right**

Nationality Distinguishing Plates **H**

### **MAGYAR AUTOKLUB (MAK)[A]**

Romer Floris u. 4./a

1024 BUDAPEST

Tel: (36-1) 345 1800

Fax: (36-1) 345 1801

Internet: [www.autoklub.hu](http://www.autoklub.hu)

Email: [autoklub@euroweb.hu](mailto:autoklub@euroweb.hu)

Breakdown service 188

Non-refundable charge for breakdown and towing service.

## **ICELAND**

Australian International Driving Permit **Recommended**  
Side of the road to drive **Right**  
Nationality Distinguishing Plates **IS**

### **FELAG ISLENZKRA BIFREIDAEIGENDA**

**(FIB)[B]**

Borgartun 33

105 REYKJAVIK

Tel: (+354) 414 9999

Fax: (+354) 414 9998

Internet: www.fib.is

Email: fib@fib.is

Limited non-refundable breakdown and towing service.

## **INDIA**

Australian International Driving Permit **Required**  
Side of the road to drive **Left**  
Nationality Distinguishing Plates **IND**

### **THE WESTERN INDIA AUTOMOBILE ASSOCIATION (WIAA)[A]**

76 Veer Nariman Road

Churchgate MUMBAI 400 020

Tel: (91-22) 2204 1085, 2204 1271

Fax: (+91-22) 2204 1382

Internet: www.wiaaindia.com

Email: wiaa@hathway.com

Non-refundable breakdown and towing service available.

Tel: 204 1271, 204 1085, 204 7032, 204 1293.

### **AUTOMOBILE ASSOCIATION OF EASTERN INDIA (AAEI) [A]**

13 Promothesh Barua Sarani, West Bengal

CALCUTTA 700019

Tel: (91-33) 24 86 51 31

Fax: (91-33) 24 86 60 12

**AUTOMOBILE ASSOCIATION OF SOUTHERN  
INDIA (AASI)[A]**

AASI Centre  
187 Anna Salai  
Chennai 600006  
Tel: (91-44) 2852 4061 / 2852 1162  
Internet: [www.asindia.org](http://www.asindia.org)  
Email: [assi40@hotmail.com](mailto:assi40@hotmail.com)

Free breakdown service on production membership card.  
Non-refundable towing charge.

•

**AUTOMOBILE ASSOCIATION OF UPPER INDIA  
(AAUI)[A]**

C-8 Institutional Area  
Behind QUTAB Hotel  
South of IIT  
NEW DELHI 110 016  
Tel: (91 11) 2685 2033  
Fax: (91 11) 26866302  
Internet: [www.aau.org](http://www.aau.org)  
Email: [aauindia@del3.vsnl.net.in](mailto:aauindia@del3.vsnl.net.in)

•

Shivam House  
14-F Connaught Place (Middle Circle)  
NEW DELHI 110 001

Tel: (91-11) 3314071 - (91-11) 3312324

Breakdown service provided by AAUI Auto Scouts is free of charge.  
Towing service can be available on non-refundable payment.

•

**UTTAR PRADESH AUTOMOBILE ASSOCIATION  
(UPAA)[A]**

32-A, Mahatma Gandhi Marg,  
Allahabad 211 001  
Tel: (91-532) 60 03 32

Free breakdown service available on production of current membership  
card and driving licence. Non-refundable towing charge.

## **INDONESIA**

Australian International Driving Permit **Recommended**  
Side of the road to drive **Left**  
Nationality Distinguishing Plates **RI**

### **IKATAN MOTOR INDONESIA (IMI)[A]**

Stadion Tennis, Sayap Kanan  
Jln. Pintu Satu, Senayan,  
Jakarta 10270  
Tel: (62-21) 571 20 32 - 573 11 02  
Fax: (62-21) 571 2037  
Internet: [www.imi.co.id](http://www.imi.co.id)  
Email: [imi@imi.co.id](mailto:imi@imi.co.id)  
Breakdown Service: 0800 1401287

## **IRAN**

Australian International Driving Permit **Required**  
Side of the road to drive **Right**  
Nationality Distinguishing Plates **IR**

### **TOURING AND AUTOMOBILE CLUB OF THE ISLAMIC REPUBLIC OF IRAN (TACI)[A]**

Avenue Khorramshahr Ave. Nobakht No 12  
TEHRAN 15338 Iran  
Tel: (982-1) 8874 0411  
Fax: (982-1) 8874 0410  
Internet: [www.taciran.com](http://www.taciran.com)  
Email: [autoclub@mail.dci.co.ir](mailto:autoclub@mail.dci.co.ir)  
Non-refundable breakdown and towing service available.

## **IRELAND**

Australian International Driving Permit **Recommended**

Side of the road to drive **Left**

Nationality Distinguishing Plates **IRL**

### **AUTOMOBILE ASSOCIATION [A]**

56 Drury Street

Co. DUBLIN

Tel: (353-1) 617 9999

Fax: (353-1) 617 9400

Internet: [www.aaireland.ie](http://www.aaireland.ie)

Email: [fiskd@aaireland.ie](mailto:fiskd@aaireland.ie)

Free breakdown and towing service.

Breakdown Service: 1800 667 788

## **ISRAEL**

Australian International Driving Permit **Recommended**

Side of the road to drive **Right**

Nationality Distinguishing Plates **IL**

### **AUTOMOBILE AND TOURING CLUB OF ISRAEL**

#### **(MEMSI)[A]**

20, Harekevet Street

TEL AVIV 65117

Tel: (972-3) 564 1122

Fax: (972-3) 564 1167

Internet: [www.memsi.co.il](http://www.memsi.co.il)

Email: [memsi@netvision.net.il](mailto:memsi@netvision.net.il)

Breakdown Service Tel: (972-3) 546 1122.

Free towing service for first 25km, additional kms must be paid for in cash.

# ITALY

Australian International Driving Permit **Required**

Side of the road to drive **Right**

Nationality Distinguishing Plates **I**

## **AUTOMOBILE CLUB OF ITALY (ACI)[A]**

Via Marsala 8

00 185 ROMA

Tel: (39-06) 49 1716

Motorists who step out of a vehicle due to problems and require warning triangles are required to wear reflecting jackets.

Non-refundable charge for breakdown and towing service.

Breakdown Service Tel: 803 116

## **AUTOMOBILE CLUB OF ROME**

Via Cristoforo Colombo 261

00147 ROME

Tel: (06) 514971

Internet: [www.aci.it](http://www.aci.it)

Email: [aci.relint.roma@aci.it](mailto:aci.relint.roma@aci.it)

## **AUTOMOBILE CLUB DE GENOA**

Via Brigade Partigiane 1

Viale GENOA

Tel: (010) 53 941

## **AUTOMOBILE CLUB OF NAPLES**

Piazzale Tecchio 49 D

80125 NAPLES

Tel: (081) 725 3811

## **AUTOMOBILE CLUB OF TURIN**

Via Giolitti 15

10123 TURIN

Tel: (011) 57 791

## **AUTOMOBILE CLUB OF VENICE**

Via Ca' Marcello 67D

Tel: (041) 531 0362

## **AUTOMOBILE CLUB OF BARI**

Via O Serena 26  
70126 BARI  
Tel: (080) 553 1717

•

## **AUTOMOBILE CLUB OF FLORENCE**

Viale Amendola 36  
50121 FLORENCE  
Tel: (055) 2 4861

•

## **AUTOMOBILE CLUB OF PALMERO**

Via Delle Alpi 6  
90144 PALMERO  
Tel: (091) 300 468

•

## **TOURING CLUB OF ITALY (TCI)[B]**

Corso Italia 10  
20122 MILAN  
Tel: (39-2) 85 261

## **JAMAICA**

Australian International Driving Permit **Required**  
Side of the road to drive **Left**  
Nationality Distinguishing Plates **JA**

## **THE JAMAICAN AUTOMOBILE ASSOCIATION (JAA) [A]**

10-12 Grenada Crescent  
Kingston 5  
Tel: (+1 876) 929 1200  
Fax: (+1 876) 929 15 35  
Internet: [www.calljaa.com](http://www.calljaa.com)  
Email: [jaa@jnbs.com](mailto:jaa@jnbs.com)  
Towing Services at special JAA rates.  
Breakdown Servide: 1 888 225 5522



**AUSTRALIAN AUTOMOBILE  
ASSOCIATION (AAA)**

**ABN 25 008 256 369**

# **INTERNATIONAL ROAD SIGNS**

**PUBLISHED BY  
AIT/FIA INFORMATION CENTRE (OTA)**

# DANGER WARNING SIGNS

The following symbols may also appear in a yellow square with one diagonal vertical instead of in a red triangle.



Right bend  
(left bend if  
the symbol is  
reversed)



Double bend  
the first to  
the left (first  
bend to right if  
symbol reversed)



Dangerous bend



Dangerous  
descent



Steep ascent



Carriageway  
narrows



Carriageway  
narrows



Swing bridge



Road leads  
onto quay or  
river bank



Uneven road



Ridge



Dip



Slippery road



Loose gravel



Falling rocks



Pedestrian  
crossing



Children



Cyclists entering  
or crossing



Cattle or other animals crossing



Road works



Light signals



Airfield



Cross-wind



Two-way traffic



Other dangers



Intersection where the priority is that prescribed by the general priority rule in force in the country



Intersection with a road the users of which must give way



Roundabout



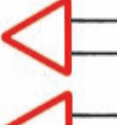
Level-crossing with gates or staggered half-gates



Other level-crossings



Intersection with a tramway line



Approaches to level-crossings

# SIGNS REGULATING PRIORITY AT INTERSECTIONS



"Give way" sign



200m

Advance warning of "give way" sign



"Stop" sign (New)



Stop sign (Old)



"Priority road" sign



"End of priority" sign



Oncoming traffic has priority



Priority over oncoming traffic



Signs placed in the immediate vicinity of level-crossings

# PROHIBITORY OR REGULATORY SIGNS



No entry



Closed to all vehicles in both directions



No entry for any power driven vehicle except two-wheeled motor cycles without side-car



No entry for motor cycles



No entry for cycles



No entry for mopeds



No entry for goods vehicles



No entry for any power driven vehicle drawing a trailer other than a semi-trailer or a single axle trailer



No entry for pedestrians



No entry for animal-drawn vehicles



No entry for handcarts



No entry for power driven agricultural vehicles



No entry for vehicles carrying more than a certain quantity of explosives or readily inflammable substances



No entry for vehicles carrying more than a certain quantity of substances liable to cause water pollution



No entry for power driven vehicles



No entry for power driven vehicles or animal-drawn vehicles



No entry for vehicles having an over-all width exceeding 2 metres



No entry for vehicles having an over-all height exceeding 3.5 metres



No entry for vehicles exceeding 5 tons laden weight



No entry for vehicles having a weight exceeding 2 tons on one axle



No entry for vehicles or combination of vehicles exceeding 10 metres in length



Driving of vehicles less than 70 metres apart prohibited



No left turn (no right turn if the symbol is reversed)



No U-turns

## PROHIBITORY OR REGULATORY SIGNS (contd.)



Overtaking by goods vehicles prohibited



Overtaking by goods vehicles prohibited



Maximum speed limit



Use of audible warning devices prohibited



Passing without stopping prohibited (e. g. for customs)



End of all local prohibitions imposed on moving vehicles



End of speed limit



End of prohibition of overtaking

Some of the above prohibitory signs may have an oblique red bar

## MANDATORY SIGNS



Direction to be followed



Pass this side



Compulsory roundabout



Compulsory cycle track



Compulsory foot-path



Compulsory track for riders on horseback



Compulsory minimum speed



End of compulsory minimum speed



Snow chains compulsory

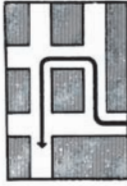
## INFORMATIVE SIGNS



No through road



Advance diversion sign



Route to be followed in order to turn left, where a left turn at the next intersection is prohibited



Preselection at intersections on roads with several lanes



Lay-out of priority road



Beginning of a built-up area



End of a built-up area



Pedestrian crossing



Pedestrian subway

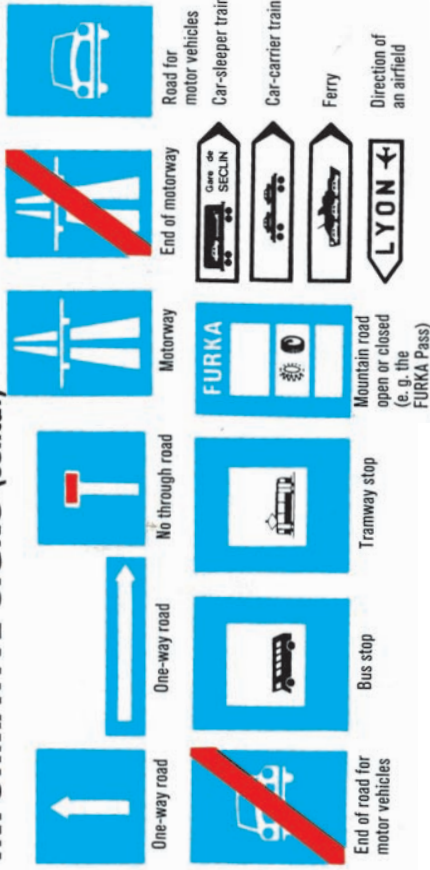


Hospital

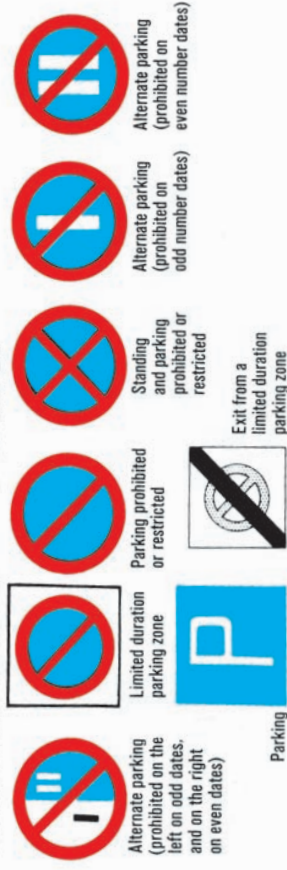


Hospital

## INFORMATIVE SIGNS (contd.)



## STANDING & PARKING SIGNS.



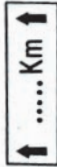
# SIGNS GIVING NOTICE OF FACILITIES WHICH MAY BE USEFUL TO ROAD USERS

	Tourist information		Restaurant
	First-aid station		Hotel or motel
	Breakdown service		Filling station
	Telephone		Caravan site
	Picnic site		Camping and caravan site
	Refreshments or cafeteria		Camping site
	Starting-point for walks		Youth hostel

## ADDITIONAL PANELS



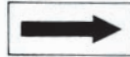
Distance from the sign to the beginning of the dangerous section of road or of the zone to which the regulation applies



Length of the dangerous section of road or of the zone to which the regulation applies



Distance covered by prohibitions or restrictions



Prohibitions or restrictions begin continue end

## AUSTRIA



No entry for lorries with trailers



Tram turns at 'yellow' or 'red'

Umleitung

Diversion



Federal road with priority



Federal road without priority



Prohibited to vehicles carrying dangerous goods



Buses only



U-turn compulsory



Street lights not on all night



Difficult section



Turn right or left



## BULGARIA



Road for private cars



U-turn allowed



Recommended maximum speed



Motorway



End of motorway



Lane prohibited to lorries

## DENMARK



Pass either side

Maximum weight  
of vehicle  
or trailer



Maximum weight  
of vehicle  
and trailer



Maximum weight  
of double axle



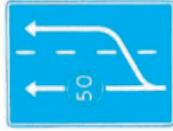
Recommended  
speed in a bend



Recommended  
speed in bend  
(additional panel)



Traffic merges



Compulsory  
slow lane



Sight-seeing



Maximum weight  
of double axle



Prohibition  
applies between  
0800 and 1800  
hours,  
Monday to Friday

## FINLAND



Prohibition  
applies between  
0800 and 1400  
hours, on Saturday



Prohibition  
applies between  
1000 and 1400  
hours, on Sunday  
and Holidays



Diversion due  
to road works



Sight-seeing

## FRANCE



No parking from 1st to 15th of month



No parking from 16th to end of month



Fortnightly parking on alternate sides



Bus lane



End of bus lane



Easily inflammable forest



Keep well over on the right



Alternative route



Tram or bus stop



Street lights not on all night



Recommended speed range



Diversion

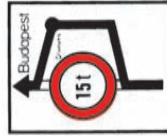


Emergency diversion for motorway traffic

## HUNGARY



Diversion



Route for heavy vehicles



Lane reserved for buses from 0700 to 1900 hours

## ITALY



Children



Easily inflammable forest



No entry for pedestrians

## NETHERLANDS



Cycle track (mopeds)



Route to be followed by vehicles carrying dangerous substances



Crossing for cyclists and moped riders



No vehicle or combination of vehicles over length shown

## NORWAY



Parking permitted for up to 2 hours between times stated



Parking permitted for 2 hours between 0800 and 1800 hours (Sat. 1600 hours)



Stopping or parking prohibited 0800 to 1000 hours; permitted for private vehicles 1000 to 1700 hours (Sat. 1500 hours)



Sight-seeing



Passing place (on narrow roads)



Tunnel

## PORTUGAL



End of parking prohibition

## SPAIN



Sight-seeing



Turning permitted



Recommended maximum speed



Compulsory lane for motorcycles without sidecars



Compulsory lane for lorries

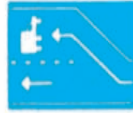


Easily inflammable forest

## SWEDEN



Tunnel



Slow lane



Maximum weight of double axle



Passing place (on narrow roads)

## SWITZERLAND



Passing place  
(for lorries)



Alternately  
flashing lights  
(at level crossing)



Flashing red light  
(at level crossing)



Heavy coaches  
prohibited



Parking disc  
compulsory



Trailers prohibited  
(except one-  
wheeled trailers)



Animals  
prohibited



Mountain  
postal road  
(Postal vehicles  
have priority)



Tunnel  
(lights must be  
switched on)



Motorway



Semi-motorway



Bus lane



Contra-flow bus lane

## UNITED KINGDOM



Ring road  
(urban through  
road)



Urban clearway  
(no stopping  
between hours  
indicated)



National speed  
limit applies



Traffic signal and  
speed cameras



Advisory route  
for lorries

# INTERNATIONAL ROAD SIGNS

**ROAD SIGNS CONFORMING WITH THE INTERNATIONAL SYSTEM ARE USED IN:**

Afghanistan	Finland	Malta	Thailand
Algeria	France	Mauritius	Tunisia
Andorra	Germany	Monaco	Turkey
Angola	Ghana	Morocco	Turkmenistan
Argentina	Greece	Mozambique	Uganda
Austria	Haiti	Netherlands	Ukraine
Bahrain	Hungary	Niger	United Kingdom
Belarus	Iceland	Norway	USA
Belgium	India	Pakistan	Uzbekistan
Bosnia-Herzegovina	Iran	Philippines	Vatican
Brazil	Iraq	Poland	Yugoslavia (Fed. Rep.)
Bulgaria	Israel	Portugal	
Cambodia	Italy	Romania	
Central Africa Rep.	Jersey	Russian Fed.	
Chile	Kazakistan	Rwanda	
Cuba	Kenya	San Marino	
Cote d'Ovoire	Korea Rep.	Senegal	
Croatia	Kuwait	Seychelles	
Cuba	Kyrgyzstan	Slovakia	
Cyprus	Latvia	Spain	
Czech Rep.	Lebanon	Suriname	
Denmark	Lithuania	Sweden	
Dominican Republic	Luxembourg	Switzerland	
Ecuador	Madagascar	Tajikistan	
Egypt	Malaysia	Tanzania	
Estonia			

*Issued by:*



**AUSTRALIAN AUTOMOBILE  
ASSOCIATION (AAA)**

ABN 25 008 256 965

216 Northbourne Avenue  
Canberra City ACT 2601

## **JAPAN**

Australian International Driving Permit **Required**  
Side of the road to drive **Left**  
Nationality Distinguishing Plates **J**

### **JAPAN AUTOMOBILE FEDERATION (JAF)[A]**

Jidosha Kaikan 14F  
1-1-30 Shibadaimon, Minato-Ku  
TOKYO 105-0012  
Tel: (813) 3578 4910  
Fax: (813) 3578 4911  
Internet: [www.jaf.or.jp](http://www.jaf.or.jp)  
Email: [kokusai@jaf.or.jp](mailto:kokusai@jaf.or.jp)  
Breakdown service free, towing free up to 5km

## **JORDAN**

Australian International Driving Permit **Required**  
Side of the road to drive **Right**  
Nationality Distinguishing Plates **HKJ**

### **ROYAL AUTOMOBILE CLUB OF JORDAN (RACJ) [B]**

Wadi Seer Cross Roads (8th Circle)  
Amman  
Tel: (9626)585 0626, 4622467  
Fax: (9626) 581 8131, 465 5136  
Internet: [www.racj.com](http://www.racj.com)  
Email: [racj@go.com.jo](mailto:racj@go.com.jo)  
Breakdown and towing services not available.

## **KENYA**

Australian International Driving Permit **Recommended**

Side of the road to drive **Left**

Nationality Distinguishing Plates **EAK**

### **AUTOMOBILE ASSOCIATION OF KENYA (AAK)[A]**

AA House, Embakasi

North Airport Road

NAIROBI

Tel: (254-20) 825 060

Internet: [www.aakenya.co.ke](http://www.aakenya.co.ke)

Email: [aakenya@wananchi.com](mailto:aakenya@wananchi.com)

Breakdown service free for city/municipality.

Towing non-refundable charge.

## **KOREA**

Australian International Driving Permit **Required**

Side of the road to drive **Right**

Nationality Distinguishing Plates **ROK**

### **KOREA AUTOMOBILE ASSOCIATION (KAA) [B]**

412 Banpo Shopping, Town 2 Dong, 75-13, Jam Won-dong,

Seo Cho-Ku, Seoul

Tel: (822) 565 7001

Fax: (822) 537 6611

Internet: [www.kaa21.or.kr](http://www.kaa21.or.kr)

Email: [international@kaa21.or.kr](mailto:international@kaa21.or.kr)

Touring information available at preferential charge.

## **KUWAIT**

Australian International Driving Permit **Required**

Side of the road to drive **Right**

Nationality Distinguishing Plates **KWT**

### **KUWAIT AUTOMOBILE AND TOURING CLUB (KATC)[A]**

Airport Road, Khaldiayah

PO Box 2100 Safat

13021 KUWAIT

Tel: (965) 482 7521

Fax: (965) 484 1433

Email: [katc@kiac.com.kw](mailto:katc@kiac.com.kw)

Non-refundable charge for breakdown and towing service.

Breakdown Service: 483 2388

## **LATVIA**

Australian International Driving Permit **Recommended**

Side of the road to drive **Right**

Nationality Distinguishing Plates **LV**

### **AUTO-MOTO SOCIETY OF LATVIA (LAMB) [A]**

16b Raunas Street

1039 Riga

Tel: (371) 6 7566 222

Fax: (371) 6 7513 678

Internet: [www.lamb.lv](http://www.lamb.lv)

Email: [lamb@lamb.lv](mailto:lamb@lamb.lv)

Breakdown and towing service available 24 hours a day. Call Nr 1888

## **LEBANON**

Australian International Driving Permit **Required**  
Side of the road to drive **Right**  
Nationality Distinguishing Plates **RL**

### **AUTOMOBILE ET TOURING CLUB DU LIBAN (ATCL)[B]**

B.P. 3545 BEYROUTH  
Tel: (9619) 640 220 / 640 607 / 640 615  
Fax: (9619) 934 662 / 640 579  
Internet: [www.atcl.org](http://www.atcl.org)  
Email: [atcl@inco.com.lb](mailto:atcl@inco.com.lb)

Limited breakdown and towing service available.  
Non-refundable charge.

## **LITHUANIA**

Australian International Driving Permit **Recommended**  
Side of the road to drive **Right**  
Nationality Distinguishing Plates **LT**

### **THE ASSOCIATION OF LITHUANIAN AUTOMOBILISTS (LAS) [C]**

Antakalnio Str.28  
10305 Vilnius  
Tel: (+370 5) 210 44 33  
Fax: (+370 5) 270 95 92  
Internet: [www.las.lt](http://www.las.lt)  
Email: [info@las.lt](mailto:info@las.lt)  
Basic touring and general information.

## **MACEDONIA (FYROM)**

Australian International Driving Permit **Recommended**

Side of the road to drive **Right**

Nationality Distinguishing Plates **Mk**

### **AUTO-MOTO ASSOCIATION OF MACEDONIA (AMSM) [A]**

Ivo Ribar Lola 51

1000 Skopje

Tel: (3892) 3181 111

Fax: (3892) 3 181 119

Internet: [www.amsm.com.mk](http://www.amsm.com.mk)

Email: [amsm@amsm.com.mk](mailto:amsm@amsm.com.mk)

Breakdown and towing services available 24 hours a day, fees payable.

Breakdown service call 196

## **MALAYSIA**

Australian International Driving Permit **Required**

Side of the road to drive **Left**

Nationality Distinguishing Plates **MAL**

### **THE AUTOMOBILE ASSOCIATION OF MALAYSIA (AAM)[A]**

No. 191/191A, Jalan Tun Razak

50450 KUALA LUMPUR

Tel: (60 3) 2162 5777

Fax: (60 3) 2161 8413

Email: [corporate@aamhq.po.my](mailto:corporate@aamhq.po.my)

Breakdown and towing free.

Breakdown Service: 1800 880808

## **MALTA**

Australian International Driving Permit **Recommended**

Side of the road to drive **Left**

Nationality Distinguishing Plates **M**

### **TOURING CLUB, MALTA, [C]**

64 Ursuline Sisters Street

16 Msida G'Mangia, Pieta

Tel: (356) 7900 0116

Fax: (356) 2123 8226

Email: x2fh@onvol.net

**We have Auto Touring Assistance (ATA) towing and breakdown services, Tel: (356) 21 487 030**

**Medical assistance 24 hrs, St James Hospital (356) 21 333 333**

**Appointed Touring club Hotel: Hotel RadissonBLU hotel (356) 374 894**

**We also have information about Car hire, travel agency etc... legal assistance... Fax: (356) 21 238 226**

## **MEXICO**

Australian International Driving Permit **Recommended**

Side of the road to drive **Right**

Nationality Distinguishing Plates **MEX**

### **ASSOCIATION MEXICANA AUTOMOVILISTICA, [AC] [B]**

Orizaba No. 7 Col. Roma

MEXICO 06700 D.F.

Tel: (5255) 5208 8329

Fax: (5255) 5207 4448

Internet: [www.ama.com.mx](http://www.ama.com.mx)

Email: [grangel@ama.com.mx](mailto:grangel@ama.com.mx)

**Non-refundable charge for breakdown and towing service.**

**Breakdown Service: 01 800 0107 100**

## **MOLDOVA**

Australian International Driving Permit **Not Required**

Side of the road to drive **Left**

Nationality Distinguishing Plates **MC**

### **AUTOMOBIL CLUB DIN MOLDOVA (ACM)**

**[B]**

57 Petru Rares Str.

2005 Chisinau

Tel: (37322) 292 703

Fax: (37322) 202 224

Internet: [www.acm.md](http://www.acm.md)

Email: [office@acm.md](mailto:office@acm.md)

General touring information is available for a fee.

## **MOZAMBIQUE**

Australian International Driving Permit **Recommended**

Side of the road to drive **Left**

Nationality Distinguishing Plates **MOC**

### **AUTOMOVEL E TOURING CLUBE DE MOZAMBIWUE (ATCM) [C]**

Eduardo Mondlane Avenue

1938 Maputo

Tel: (+258) 21 326 220

Fax: (+258) 21 326 219

Internet: [www.atcm.org.co.mz](http://www.atcm.org.co.mz)

Email: [atcmoz@yahoo.com](mailto:atcmoz@yahoo.com)

Basic touring and general information, advice and help. Free of charge

## **NAMIBIA**

Australian International Driving Permit **Recommended**

Side of the road to drive **Left**

Nationality Distinguishing Plates **NAM**

## **THE AUTOMOTIVE ASSOCIATION OF NAMIBIA [A]**

Carl List Haus15, Independence Ave.

Fidel Castro Street, Windhoek

Tel: (26461) 224 201

Fax: (26461) 222 446

Breakdown and towing service is available 24 hours a day by appointed garages in town as well as around the country. Fees payable direct to the garages.

## **NETHERLANDS**

Australian International Driving Permit **Not Required**

Side of the road to drive **Right**

Nationality Distinguishing Plates **NL**

## **KONINKLIJKE NEDERLANDSE TOERISTENBOND (ANWB)[A]**

Wassenaarseweg 220

2596 EC The Hague

Tel: (3170) 3147 147

Fax: (3170) 314 6969

Internet: [www.anwb.nl](http://www.anwb.nl)

Email: [info@anwb.nl](mailto:info@anwb.nl)

Road Assistance Services: 088 2692888

Non refundable charge for towing assistance.

•  
ANWB, Museumplein 5

1071 DJ AMSTERDAM

Tel: (020) 673 0844  
•

ANWB Osdorpplein 885  
1068 TD AMSTERDAM  
Tel: (020) 610 4905

•

ANWB Bijlmerplein 1001  
1102 MK AMSTERDAM  
Tel: (020) 691 3996

•

Holland Travel Information HTI Schiphol Airport  
Schiphol Plaza  
Tel: (020) 551 2512

## **NEW ZEALAND**

Australian International Driving Permit **Not Required**  
Side of the road to drive **Left**  
Nationality Distinguishing Plates **NZ**

### **NEW ZEALAND AUTOMOBILE ASSOCIATION INC (NZAA) [A]**

AA Centre  
99 Albert Street, AUCKLAND  
Tel: (64-9) 966 8800  
Fax: (64-9) 966 8896  
Internet: [www.aa.co.nz](http://www.aa.co.nz)  
Email: [info@aa.co.nz](mailto:info@aa.co.nz)

•

#### **WELLINGTON**

342 Lambton Quay  
Tel: (64 4) 931 9999 - Fax: (64 9) 471 2080

•

#### **CHRISTCHURCH**

210 Hereford Street  
Tel: (64-3) 379 1280  
Breakdown telephone: 0800 500 222

Roadside assistance and towing service to nearest contract garage is free.  
All repairs costs and parts charges are member's responsibility. When  
contract garage makes a charge, a refund can be obtained by presenting  
a receipt and current Membership Card to NZAA office.

## **NORWAY**

Australian International Driving Permit **Not Required**

Side of the road to drive **Right**

Nationality Distinguishing Plates **N**

### **NORGES AUTOMOBIL-FORBUND (NAF)[A]**

Storgt. 2

0155 OSLO Norway

Tel: +47 22 34 1400

Fax: +47 22 331372

Internet: www.naf.no

Email: naf@naf.no

Non-refundable charge for breakdown and towing service.

Breakdown Service: 08505

## **OMAN**

Australian International Driving Permit **Recommended**

Side of the road to drive **Right**

### **OMAN AUTOMOBILE ASSOCIATION (OAA)**

**[C]**

CPO SEEB

Postal Code 111, Sultanate of Oman

Tel: (968) 24 510 239, 24 510 630

Fax: (968) 24 510 276

Internet: www.omanautoclub.com

Email: omanauto@omantel.net.om

General touring information available between 8 am and 2 pm weekdays (Saturday to Wednesday) and from 9 am to 1 pm on Thursdays. Closed on Fridays.

## **PAKISTAN**

Australian International Driving Permit **Required**

Side of the road to drive **Left**

Nationality Distinguishing Plates **PK**

### **AUTOMOBILE ASSOCIATION OF PAKISTAN (AAP) [B]**

155, Chenab Block, Allama Iqbal Town

Lahore 54570

Tel: (9242) 7841 154, 7445 320

Fax: (9242) 7831 260

Email: aapkint@yahoo.com

General touring information such as maps, route itinerary is available to members of foreign clubs free of charge.

## **PARAGUAY**

Australian International Driving Permit **Required**

Side of the road to drive **Right**

Nationality Distinguishing Plates **PY**

### **TOURING AND AUTOMOBILE CLUB OF PARAGUAY (TACPY)[A]**

25 de Mayo 7 Brasil

ASUNCION

Tel: (59521) 210550

Internet: [www.tacpy.com.py](http://www.tacpy.com.py)

Email: [info@tacpy.com.py](mailto:info@tacpy.com.py)

Free services for foreign members: Emergency assistance and towing (within the range covered by the club's main office, branches or bases).

Oil change (labour).

## PERU

Australian International Driving Permit **Recommended**

Side of the road to drive **Right**

Nationality Distinguishing Plates **PE**

### **TOURING AND AUTOMOBILE CLUB OF PERU (TACP)[A]**

Cesar Vallejo 699

LINCE (LIMA 14)

Tel: (51-1) 614 9999

Fax: (51-1) 441 9652

Internet: [www.touringperu.com.pe](http://www.touringperu.com.pe)

Email: [presidencia@touringperu.com.pe](mailto:presidencia@touringperu.com.pe)

Free breakdown and towing service up to 30km.

## PHILIPPINES

Australian International Driving Permit **Recommended**

Side of the road to drive **Right**

Nationality Distinguishing Plates **RP**

### **AUTOMOBILE ASSOCIATION PHILIPPINES (AAP)[A]**

683 Aurora Boulevard

1112 Quezon City

Tel: (+63 2) 723 08 08

Fax: (+63 2) 726 42 27

Internet: [www.aap.org.ph](http://www.aap.org.ph)

Email: [info@aap.org.ph](mailto:info@aap.org.ph)

Free towing service in greater Manilla area.

Breakdown Service: 723 0808

Two free service call outs only are allowed within 3 months from arrival date. Free service is within the boundaries of Metro and Cebu City.

Subsequent calls for assistance will be charged 800.00 pesos.

Additional 40.00 pesos per kilometer will be charged outside boundaries.

## **POLAND**

Australian International Driving Permit **Required**  
Side of the road to drive **Right**  
Nationality Distinguishing Plates **PL**

### **POLSKI ZWIAZEK MOTOROWY (PZM)**

#### **“AUTOTOUR” LTD [A]**

Ul. Kazimierzowska 66  
02 518 WARSAW  
Tel: (48-22) 849 9361  
Fax: (48-22) 848 1951  
Internet: [www.pzm.pl](http://www.pzm.pl)  
Email: [office@pzm.pl](mailto:office@pzm.pl)

In case of breakdown PZM Autordour's Alarm Centre  
ul. Solec 22, 00-410  
Warsaw

Tel: (48-22) 532 84 33

arranges assistance nation-wide, round the clock.  
Breakdown and towing service charges are non-refundable.

## **PORTUGAL**

Australian International Driving Permit **Recommended**  
Side of the road to drive **Right**  
Nationality Distinguishing Plates **P**

### **AUTOMOVEL CLUB DE PORTUGAL (ACP) [A]**

Rua Rosa Araujo 24  
1114 LISBON  
Tel: (351-21) 318 0100  
Fax: (351-21) 318 0227  
Internet: [www.acp.pt](http://www.acp.pt)  
Email: [cm@acp.pt](mailto:cm@acp.pt)

For emergency service

North of the country Tel: (351-22) 834 0001

South of the country (351-21) 942 9103

Non-refundable charge for breakdown and towing.

## **QATAR**

Australian International Driving Permit **Recommended**  
International Driving Permits (1949, 1968) for 15 days; local temporary  
driving Licence issued by Licensing Authority on presentation of  
national driving licence.

Side of the road to drive **Right**  
Nationality Distinguishing Plates **QA**

## **QATAR AUTOMOBILE & TOURING CLUB (QATC) [C]**

"C" Ring Road  
Doha

Tel: (974) 4413 265, 4415 718

Fax: (974) 4414 319

Email: [aswantrading@qatar.net.qa](mailto:aswantrading@qatar.net.qa)

Basic touring and general information, advice and practical help if  
possible, free of charge.

## **ROMANIA**

Australian International Driving Permit **Required**  
(for a period of 90 days or, if a visa is required, for the period of validity  
of the visa)

Side of the road to drive **Right**  
Nationality Distinguishing Plates **RO**

## **AUTOMOBILE CLUB OF ROMANIA (ACR) [A]**

27 Take Ionescu Street,  
Sector 1

70154 - BUCHAREST

Tel: (4021) 315 5510

Fax: (4021) 312 8462

Internet: [www.acr.ro](http://www.acr.ro)

Email: [acr@acr.ro](mailto:acr@acr.ro)

Non-refundable charge for breakdown and towing service.

Breakdown Service: 222 1553

## **RUSSIA**

Australian International Driving Permit **Recommended**  
Side of the road to drive **Right**  
Nationality Distinguishing Plates **RUS**

### **RUSSIAN AUTOMOBILE SOCIETY [C]**

Leotjevskij per. 23  
Moscow 125 009  
Tel: (+7495) 629 7540  
Fax: (+7495) 692 3973  
Internet: www.voa.ru  
Email: voa@voa.ru / service@voa.ru

## **SAUDI ARABIA**

Australian International Driving Permit **Required**  
Side of the road to drive **Right**  
Nationality Distinguishing Plates **SA**  
**Woman are not allowed to drive**

### **SAUDI AUTOMOBILE & TOURING ASSOCIATION (SATA) [B]**

Al Akariah Building, Olayah Street  
11553 Riyadh  
SINGAPORE 238366  
Tel: (9661) 473 6540  
Fax: (9661) 476 3075  
Internet: www.sata-sa.com  
Email: gm@sata-sa.com

Breakdown service is available 24 hours a day by road patrols in metropolitan areas for a fee by calling Toll free on:  
Riyadh: (01) 462 37 81, Jeddah: (02) 649 56 52, Damman: (03) 837 25 79

## **SERBIA**

Australian International Driving Permit **Recommended**

Side of the road to drive **Right**

Nationality Distinguishing Plates **SRB**

### **AUTO-MOTO SAVEZ SRBIJE (AMSS) [A]**

Kneginje Zorke 58, B.P. 379

11001 Beograd

Tel: (+38111) 333 1200

Fax: (+503) 333 1230

Internet: [www.amss.org.yu](http://www.amss.org.yu)

Email: [amss@amss.org.yu](mailto:amss@amss.org.yu)

Breakdown service available 24 hours a day in bigger towns, charges payable.

Breakdown Service: Call 987

## **SENEGAL**

Australian International Driving Permit **Recommended**

Side of the road to drive **Right**

Nationality Distinguishing Plates **SN**

### **TOURING CLUB DU SENEGAL (TCSN) [C]**

Rue Malan, Villa Mr Bourgi (Imm. Elektra)

Parking ancienne Ambassade du Japon,

B.P. 6046, Dakar-Etoile

Tel: (221) 823 1018

Fax: (221) 823 2171

Free basic touring and general information to AIT members. Advice concerning their stay in Senegal and existing laws and regulations. Assistance with dealing with authorities, especially customs and road transport authorities.

## **SINGAPORE**

Australian International Driving Permit **Recommended**

Side of the road to drive **Left**

Nationality Distinguishing Plates **SGP**

### **THE AUTOMOBILE ASSOCIATION OF SINGAPORE (AAS) [A]**

AA Centre,

336 River Valley Road

SINGAPORE 238366

Tel: (65) 6333 8811

Fax: (65) 6733 5094

Internet: [www.aas.com.sg](http://www.aas.com.sg)

Email: [aasmail@aas.com.sg](mailto:aasmail@aas.com.sg)

24 hr vehicle recovery and towing service.

Free accident tow - payable.

Breakdown Service: 6748 9911

## **THE SLOVAK REPUBLIC**

Australian International Driving Permit **Recommended**

Side of the road to drive **Right**

Nationality Distinguishing Plates **SK**

### **SLOVENSKY AUTOTURIST KLUB (SATC) [A]**

Racianska 71, PO Box 71 SK-

83008 BRATISLAVA

Tel: (421-7) 682 492 10

Internet: [www.satc.sk](http://www.satc.sk)

Email: [satc@autoklub.sk](mailto:satc@autoklub.sk)

Non-refundable charge for breakdown and towing service.

The breakdown service operates all over the country 24 hours a day.

Breakdown Service: 18124

## **SLOVENIA**

Australian International Driving Permit **Required**

Side of the road to drive **Right**

Nationality Distinguishing Plates **SLO**

### **AVTO-MOTO ZVEZA SLOVENIJE (AMZS) [A]**

Dunajska 128

51-1000 Ljubljana

Tel: (386-1) 530 5300

Fax: (386-1) 530 5410

Internet: [www.amzs.si](http://www.amzs.si)

Email: [info.center@amzs.si](mailto:info.center@amzs.si)

24 hour breakdown and towing service available.

Towing service to be paid for in cash (non-refundable).

Breakdown Service: 1987 from Call boxes

Breakdown Services: (+3861) 530 5353 from Mobile phones.

## **SOUTH AFRICA**

Australian International Driving Permit **Recommended**

Side of the road to drive **Left**

Nationality Distinguishing Plates **ZA**

### **THE AUTOMOBILE ASSOCIATION OF SOUTH AFRICA (AASA) [A]**

Denis Paxton House

Kyalami Grand Prix Circuit

Allandale Road, Kyalami, Midrand

Tel: (27-11) 799 1000

Fax: (27-11) 799 1795

Internet: [www.aasa.co.za](http://www.aasa.co.za)

Email: [pkruiger@aa.co.za](mailto:pkruiger@aa.co.za)

Breakdown and towing free if provided by club patrols.

Breakdown Service: 083 843 22

Non-refundable charge for towing if not provided by club's own patrol.



Shop 33, Parkade Mall  
Strand Street,  
CAPETOWN 8001  
Tel: (021) 419 6914



Shop 317, Musgrave Centre  
Musgrave Road  
DURBAN 4001  
Tel: (031) 201 5244

## **SPAIN**

Australian International Driving Permit **Required**  
Side of the road to drive **Right**  
Nationality Distinguishing Plates **E**

### **REAL AUTOMOVIL CLUB DE ESPANA (RACE) [A]**

C/Isaac Newton, s/n, Praque Technologies de Madrid (PTM)  
28760 TRES CANTOS, MADRID  
Tel: (34) 915 947 275  
Fax: (34) 915 947 536  
Internet: [www.race.es](http://www.race.es)  
Email: [internacional@race.es](mailto:internacional@race.es)  
Breakdown Service: 902 300 505  
Special rates apply to AIT members.



### **ROYAL AUTOMOBILE CLUB OF CATALUNA**

C/- AV Diagonal 687 08028 BARCELONA  
Tel: (34) 93 495 5058

## **SRI LANKA**

Australian International Driving Permit **Required**  
Accompanied by Recognition Permit issued by AA Ceylon - small fee payable  
Side of the road to drive **Left**  
Nationality Distinguishing Plates **CL**

Holder should visit this office and produce his AAA International Driving Permit for our perusal to enable us to issue him with a Recognition Permit, which has to be carried along with his AAA IDP for driving here.  
This permit is issued free. IDP must be accompanied by Recognition Permit issued free by AA Ceylon

## **AUTOMOBILE ASSOCIATION OF CEYLON (AAC)[A]**

40, Sir M.M.M. Mawatha, COLOMBO 3

Tel: (941) 421 528

Fax: (941) 446 074

Email: aacmotor@sltnet.lk

Free 24 hour breakdown service per day and night is available at the A.A.C. Headquarters. Towing service is also provided at a nominal non-refundable fee.

Breakdown Service: 421 528

## **SWEDEN**

Australian International Driving Permit **Not Required**  
Side of the road to drive **Right**  
Nationality Distinguishing Plates **S**

## **MOTORMANNENS RIKSFORBUND (M)[B]**

Sveavagen 159

STOCKHOLM

PO Box 231 52 - S 104 35 Stockholm

Tel: (+468) 690 38 00

Fax: (+468) 690 38 24

Internet: [www.motormannen.se](http://www.motormannen.se)

Email: [touring@motormannen.se](mailto:touring@motormannen.se)

Club will assist in referring member to appropriate bodies for assistance when the club cannot assist.

## **SWITZERLAND**

Australian International Driving Permit **Recommended**

Side of the road to drive **Right**

Nationality Distinguishing Plates **CH**

### **TOURING CLUB OF SWITZERLAND (TCS)[A]**

Chemin de Blandonnet 4

Case postale 820

1214 Vernier/Geneve

Tel: (41-22) 417 27 27

Fax: (41-22) 417 27 22

Internet: www.tcs.ch

Email: international@tcs.ch

Breakdown service: 140 (24 hours a day) or 0800 140 140

Special discount of CHF 30.00 (EUR 20.00) on the new rate of the  
breakdown assistance is available for AIT/FIA club members.

Spare parts available.

## **THAILAND**

Australian International Driving Permit **Required**

Side of the road to drive **Left**

Nationality Distinguishing Plates **T**

### **ROYAL AUTOMOBILE ASSOCIATION OF THAILAND [C]**

151 Ratchadapisek Road,

Bangkok

BANGKOK 10900

Tel: (662) 939 5770

Fax: (662) 511 2230

Internet: www.raat.or.th

Email: raat\_thailand@hotmail.com

Free 24 hour breakdown and towing service available.

Towing limited to Bangkok.

## **TRINIDAD AND TOBAGO**

(West Indies)

Australian International Driving Permit **Required**

An IDP must be presented to the Trinidad and Tobago Automobile Association for registration and notification to the Transport Division as soon as possible after arrival.

Side of the road to drive **Left**

Nationality Distinguishing Plates **TT**

### **TRINIDAD AND TOBAGO AUTOMOBILE ASSOCIATION (TAA)[B]**

41 Woodford Street,

Newtown

PORT-OF-SPAIN

Tel: (1868) 622 7194

Fax: (1868) 622 9079

Email: taa@tsstt.net.tt

Services offered are free of charge to visiting AIT members but they must register with the association on arrival.

24 hours wrecker/breakdown service. For a call-out fee of TT\$20

## **TUNISIA**

Australian International Driving Permit **Required**

Side of the road to drive **Right**

Nationality Distinguishing Plates **TN**

### **TOURING CLUB OF TUNISIA (TCT)[A]**

15, rue d'Allemagne

TUNIS

Tel: (21671) 323 114

Fax: (21671) 324 834

Breakdown service is free if provided by club patrol or police otherwise non-refundable charge.

Non-refundable charge for towing.

Breakdown Service: 71 296 627 or 989 307 263

# **TURKEY**

Australian International Driving Permit **Required**

Side of the road to drive **Right**

Nationality Distinguishing Plates **TR**

## **TURKISH TOURING AND AUTOMOBILE CLUB (TTOK)[B]**

Central: 1. oto Sanayi Sitesi yani

4 Levent, Istanbul Turkiye

Tel: (90212) 282 8140

Fax: (90212) 282 8042

Internet: [www.turing.org.tr](http://www.turing.org.tr)

Email: [turing@turing.org.tr](mailto:turing@turing.org.tr)

Maresal Fevzi Cakmak Caddesi No: 31/8 Besevler

ANKARA

Tel: (0312) 213 9761 - 222 8723

Non-refundable breakdown and towing service available.

Breakdown Service: Istanbul (90212) 278 6214 between 9 am and 5 pm

# **UGANDA**

Australian International Driving Permit **Recommended**

Side of the road to drive **Left**

Nationality Distinguishing Plates **EAU**

## **AUTOMOBILE ASSOCIATION OF UGANDA [A]**

Plot No. 244, Tufnell Drive, Off Kira Road, Opposite

Uganda Museum, Kampala

Tel: (+25641) 250 745

Fax: (25641) 250 814

Internet: [www.aau.co.ug](http://www.aau.co.ug)

Email: [aau@uonline.co.ug](mailto:aau@uonline.co.ug)

Breakdown service is available 24 hours a day, free of charge for the first 100 km out of Kampala City Centre. For distances over 100 kms a members pays a minimum of fuel used. Foreign AIT club members, the club will cover 3 months when travelling abroad.

Breakdown service number (within Uganda) tel: 041 250745, (outside Uganda) tel: (+25641) 255 917

## **UKRAINE**

Australian International Driving Permit **Recommended**  
Side of the road to drive **Right**  
Nationality Distinguishing Plates **UA**

### **COMPANY 112 UKRAINE (112 UA) [A]**

House 6, Pidstrygacha Street  
79000 LVIV  
Tel: (+380 322) 970 112  
Fax: (+380 322) 971 112  
Internet: [www.112ua.com](http://www.112ua.com)  
Email: [office@112ua.com](mailto:office@112ua.com)

## **UNITED ARAB EMIRATES**

Australian International Driving Permit **Required**  
Side of the road to drive **Right**  
Nationality Distinguishing Plates

### **AUTOMOBILE AND TOURING CLUB FOR UNITED ARAB EMIRATES (ATC UAE)[B]**

Al Nasr Street  
PO Box 27487  
ABU DHABI  
Tel: (971-4) 228 4019  
Fax: (9712) 228 3159  
Internet: [www.atcuae.org](http://www.atcuae.org)  
Email: [atcuae@emirates.net.ae](mailto:atcuae@emirates.net.ae)  
Breakdown and towing services available.

# UNITED KINGDOM

Australian International Driving Permit **Not Required**

Side of the road to drive **Left**

Nationality Distinguishing Plates **GB**

## **RAC MOTORING SERVICES**

Pall Mall Clubhouse, 89 Pall Mall

London SW1Y 5HS

Tel: (+44 207) 930 2345

Fax: (+44 207) 976 1086

Email: [membershipcustomercare@rac.co.uk](mailto:membershipcustomercare@rac.co.uk)

Internet: [www.rac.co.uk](http://www.rac.co.uk)

Breakdown Service: The RAC UK has established a free phone number for Australian Club members travelling in the UK. The member simply needs to call the toll free phone number (0800 0155670) and quote the scheme code (AUSRAC), details then appear on the RAC computer system so that the operator can provide assistance. The RAC will require sight of the Australian Club Membership Card to prevent abuse of the scheme.

The "Rescue" service offered provides roadside assistance, or a tow to a local garage within a ten-mile radius.

## **THE AUTOMOBILE ASSOCIATION (AA) [C]**

Centrica PLC, Southwood, Apollo Rise

Farnborough, GU14 OJW

Tel: (+44 8705) 44 88 66

Fax: (+44 1256) 49 31 17

Email: [elaine.badham@theaa.com](mailto:elaine.badham@theaa.com)

Breakdown Service: For a 24 hour breakdown assistance in Great Britain and Northern Ireland, call the AA on tel. 0800 028 90 18

Members of AIT-affiliated clubs UK roadside assistance and local tow is available for a fixed call-out fee of £120.00 (payable by credit card to the AA call-handler at the time of the incident).

Members of AIT-affiliated clubs travelling in UK rental vehicles should use the breakdown assistance service supplied by the rental agency.

For general information, ring the AA Information Centre on 08705 500 600 (open 7 days a week from 7 am until 11 pm).

# UNITED STATES OF AMERICA

Australian International Driving Permit **Recommended**

Side of the road to drive **Right**

Nationality Distinguishing Plates **USA**

## **AMERICAN AUTOMOBILE ASSOCIATION (AAA)[A]**

1000 AAA Drive, Heathrow

FLORIDA 32746-5063

Tel: (1407) 444 7223

Fax: (1407) 444 7750

Internet: [www.aaa.com](http://www.aaa.com)

Email: [gbrannon@national.aaa.com](mailto:gbrannon@national.aaa.com)

Emergency road services available 24 hours a day; including battery jump starting, towing (up to 3 miles without charge) and flat tyre, vehicle lockout and fuel services (plus fuel costs).

Breakdown Service: 1800 222 4357

•

## **AUTOMOBILE CLUB OF MICHIGAN [A]**

1 Auto Club Drive

Dearborn MICHIGAN 48126

Tel: (800) 222-6424

•

## **AUTOMOBILE CLUB OF NEW YORK [A]**

1415 Kellum Place

Garden City, New York 11530

Tel: (516) 746-7141

•

## **CALIFORNIA STATE AUTOMOBILE ASSOCIATION [A]**

150 Van Ness Avenue

SAN FRANCISCO California 94102

Tel: (415) 565 2012

•

**AUTOMOBILE CLUB OF SOUTHERN  
CALIFORNIA [A]**

3333 Fairview Road  
Costa Mesa, California 92626  
Tel: (714) 850-5111



**AAA WASHINGTON**

1745 114th Avenue SE  
Bellevue Washington 98004  
Tel: (800) 652-2582



**AAA HAWAII**

1270 Ala Moana Boulevard  
Honolulu Hawaii 96814  
Tel: (808) 593-2221

No emergency roadside assistance is available.  
For towing it is necessary to visit the TACV main office to obtain a  
special coupon.

**YEMEN**

Australian International Driving Permit **Recommended**  
Side of the road to drive **Right**  
Nationality Distinguishing Plates **YAR**

**YEMEN CLUB FOR TOURING & AUTOMOBILE  
(YCTA) [B]**

Universal Building, 60 Meter Road  
Diplomatic Quarters  
PO Box 19406  
Sana's  
Tel & Fax: (+9671) 441 351  
Internet: [www.universalyemen.com](http://www.universalyemen.com)  
Email: [ycta@universalyemen.com](mailto:ycta@universalyemen.com)

# **ZIMBABWE**

Australian International Driving Permit **Recommended**

Side of the road to drive **Left**

Nationality Distinguishing Plates **ZW**

## **AUTOMOBILE ASSOCIATION OF ZIMBABWE (AAZ)[A]**

7th Floor,

Fanum House, Samora Machel Avenue

HARARE

Tel: (263-4) 78 81 73

Fax: (263-4) 77 69 61

Internet: [www.aazimbabwe.co.zw](http://www.aazimbabwe.co.zw)

Email: [aazhohre@zol.co.zw](mailto:aazhohre@zol.co.zw)

Charge made for breakdown service.

Free towing within 50km and 25km radius of Harare and Bulawayo respectively. Outside these areas non-refundable fee is charged.

Breakdown Service: Harare (04) 776 760

Every effort has been made to ensure that the information contained in this booklet is accurate and up-to-date. However, the Australian Automobile Association cannot accept responsibility for errors or omissions which may have occurred in preparation.

2010