

# RAC Member Priorities Tracker

## Commuting & Congestion

In September 2020, 357 of our members<sup>1</sup> took part in a survey telling us about their daily commute, what activities they would do if their commute was shorter and their views on traffic congestion and how it could be managed more effectively.

### Our commute

Members<sup>2</sup> show a high level of satisfaction with their daily commute, but many are still looking at ways to improve it.

#### Satisfaction

**73%** are satisfied<sup>3</sup> with their daily commute  
**58%** of regular peak hour drivers<sup>4</sup> in Perth  
**77%** of those living in regional WA

**44%** took action in the last year to improve their daily commute  
The most common actions were:  
Work from home **10%**  
Drive more **10%**

#### Commuting time

**89%** estimated the length of their daily commute to be under one hour

**30 mins** was the average estimated commuting time<sup>5</sup>  
**25** minutes for regional members  
**38** minutes for regular peak hour drivers in Perth

**14 mins** was the average acceptable<sup>6</sup> increase in commuting time  
**17** minutes for regional members  
**4** minutes for regular peak hour drivers in Perth

**42 mins** is the average maximum commute time both regional members and regular peak hour drivers in Perth would be willing to travel

Top three responses<sup>7</sup> for how members would use additional time gained from a shorter commute:

**19%** Spend time with family and friends



**18%** Exercise (individual)



**17%** Jobs around the home



### What we think about congestion

Congestion is an issue for our Perth and regional members.

#### Regional members

At least once a week:

**40%** experience congestion in their local area/ town centre  
5 or more days a week **10%**  
A few days a week **21%**

**36%** experience congestion on regional roads/ highways  
5 or more days a week **10%**  
A few days a week **16%**

<sup>1</sup> 265 from the Perth and Peel region, 90 from regional WA, and 2 from outside WA. Age, gender and location sampling quotas were applied, and data has been post-weighted to be representative of RAC's membership (which is broadly consistent with the WA population profile) - the margin of error at total sample level is +/-5% at the 95% confidence level.

<sup>2</sup> Question was asked of the 220 members who commute.

<sup>3</sup> Results are based on members who said they were 'satisfied' or 'very satisfied'.

<sup>4</sup> Drive in peak hour five or more days a week.

<sup>5</sup> Members were asked to estimate their average commuting time (i.e. one-way trip to their destination).

<sup>6</sup> Members were asked 'what would be the maximum time (mins) you would be willing to travel to your destination (thinking about a one-way trip)'.

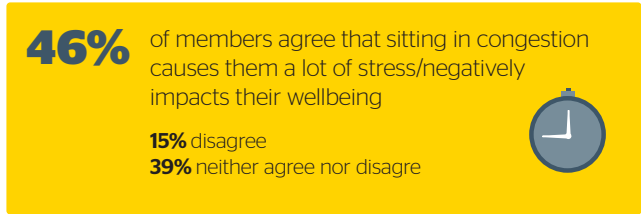
<sup>7</sup> Prompted responses were offered and members could select their top response.



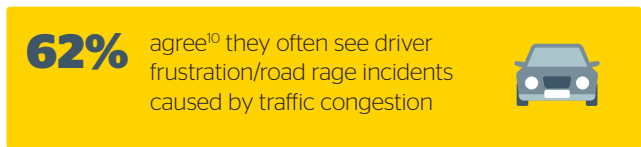
**For the better**

## Perth members

In the past 12 months, members think<sup>8</sup> congestion on Perth roads has:



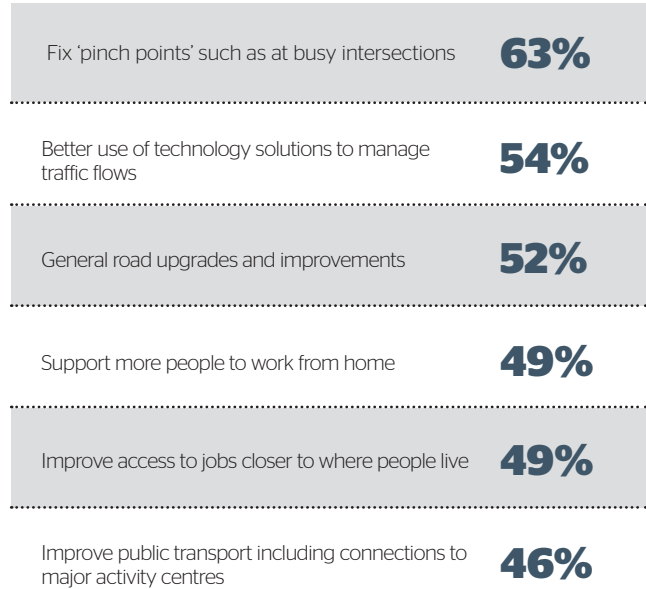
Members think the main causes<sup>9</sup> of traffic congestion on Perth roads relate to:



## Government action on Perth roads<sup>11</sup>



Top initiatives<sup>13</sup> to ease traffic congestion 'a lot' or 'a great deal' on Perth roads:



<sup>8</sup> 'Don't know / can't say' was selected by 14%. Numbers do not add to 100% due to rounding.

<sup>9</sup> Prompted responses were offered and members could select their top response.

<sup>10</sup> Results are based on members who said they 'agreed' or 'strongly agreed'.

<sup>11</sup> Metropolitan members only.

<sup>12</sup> Results are based on members who said they 'agreed' or 'strongly agreed'.

<sup>13</sup> Prompted responses were offered and members were asked 'how much do you think the following initiatives would help to ease traffic congestion on Perth roads'.



[advocacy@rac.com.au](mailto:advocacy@rac.com.au)