

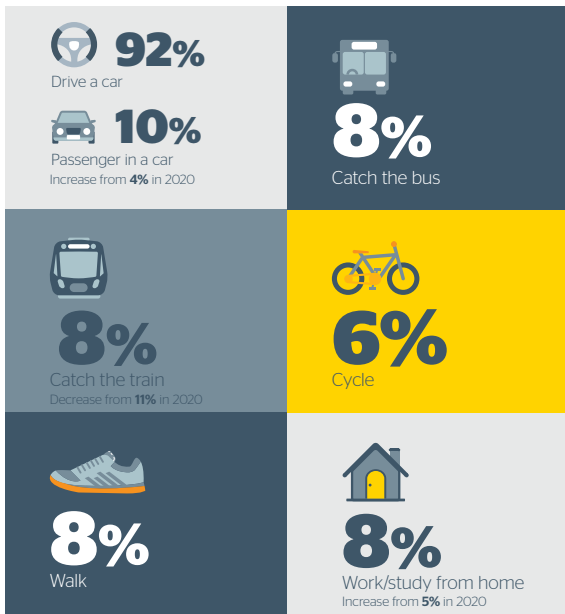
RAC Member Priorities Tracker

Transport choices and priorities

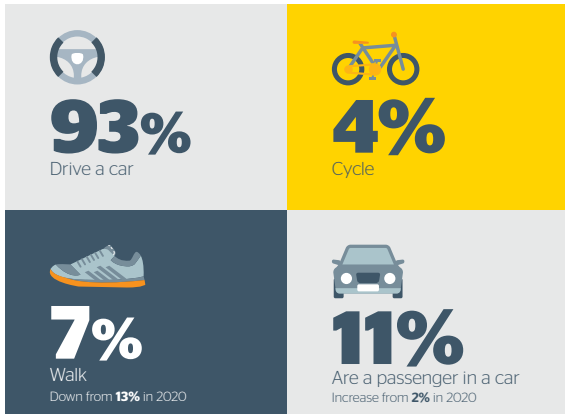
In February and March 2021, 424 of our members¹ took part in a survey telling us how they move around and their priorities for government action to deliver transport options that are safer, more sustainable and better connect Western Australians and their communities now and in the future.

Getting to Work/Study

Modes of travel members currently use²:

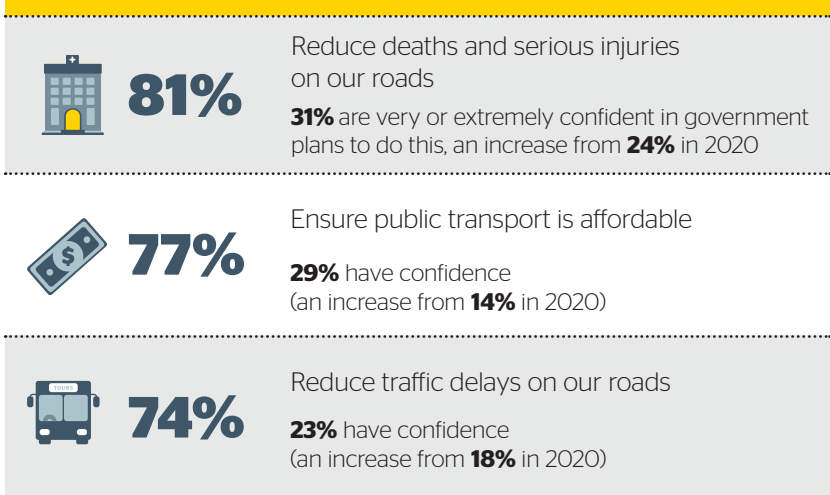


Regional members specifically, typically use:



Top Priorities for Government

Members feel it's most important³ for government to act to:



Where we live and how we travel impacts our priorities

Regional members want action to reduce deaths and serious injuries on our roads (**83%**) and to keep motoring costs down (**75%**)

Regular public transport users⁴ want action to ensure public transport is affordable (**90%**) and convenient (**87%**) and to increase job opportunities closer to where people live (**83%**)

Regular bike riders⁵ want action to ensure public transport is affordable (**81%**), and to make it easier and safer to cycle (**79%**) and walk (**79%**)

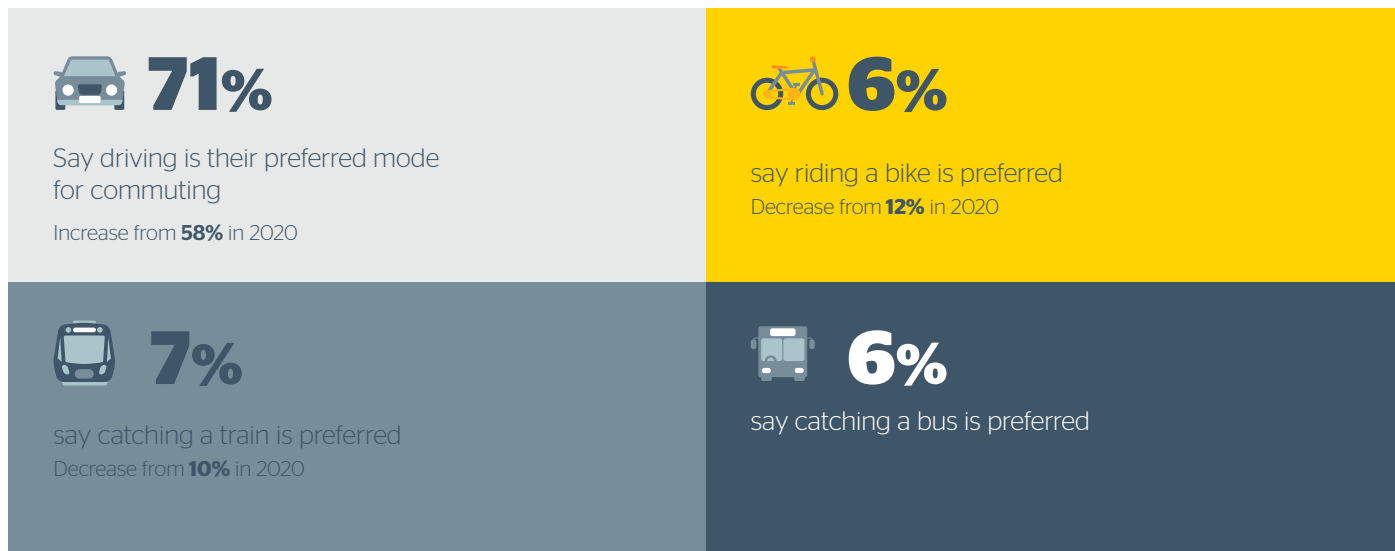
¹ 322 from the Perth and Peel region, 98 from regional WA and four members currently outside WA. Age, gender and location sampling quotas were applied, and data has been post-weighted to be representative of RAC's membership (which is broadly consistent with the WA population profile) - the margin of error at total sample level is +/-5% at the 95% confidence level.
² Responses sum to more than 100% as respondents may nominate more than one mode of travel. For instance some members park and ride at train stations to get to work/study. Other travel modes typically used by less than 4% of members have not been included in this graphic.
³ Based on respondents who said it is very or extremely important.
⁴ Those who use public transport at least once a week (47 responses).
⁵ Those who ride a bike at least once a week (58 responses).



RAC Member Priorities Tracker

Transport choices and priorities

How we prefer to travel to work/study is changing:



Why do we prefer these ways of travelling?

The top three reasons why people prefer the following modes of travel are:

Car



68%
Convenient/Easy

40%
Reliable

15%
Enjoyable

Public transport



78%
Convenient/Easy

38%
Environmental considerations

32%
Affordable

Cycling



67%
Enjoyable

50%
Convenient/Easy

50%
Health reasons



For further information
please contact advocacy@rac.com.au